

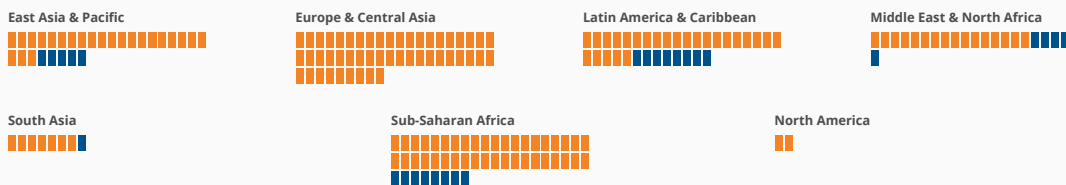
Norms and Decision-making

Social norms continue to constrain women's capacity to effectively participate in society. Addressing these attitudes about women's roles at all ages and societal levels is essential for moving towards a more gender equal redistribution of roles and inclusion of more women in decision-making processes.

A woman can apply for a passport in the same way as a man.

Yes No

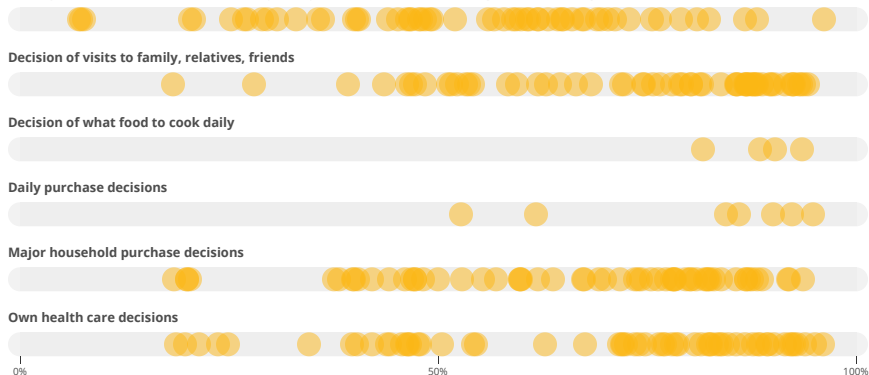
Hover over each square to see the data for specific economies



Source: World Bank: Women, Business and the Law, <https://wbl.worldbank.org>

Women's participation in decision making (% of women ages 15-49)

Making their own informed decisions regarding sexual relations, contraceptive use and reproductive health care

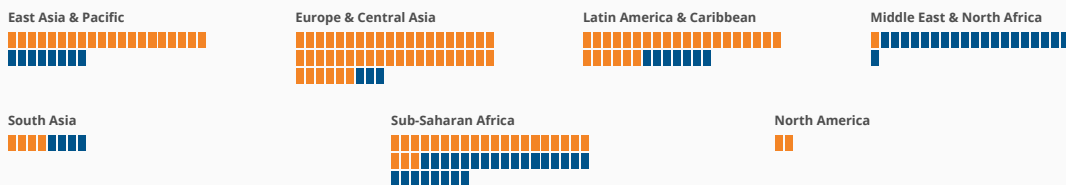


Source: Demographic and Health Surveys compiled by United Nations Population Fund

A woman has the same rights to remarry as a man

Yes No

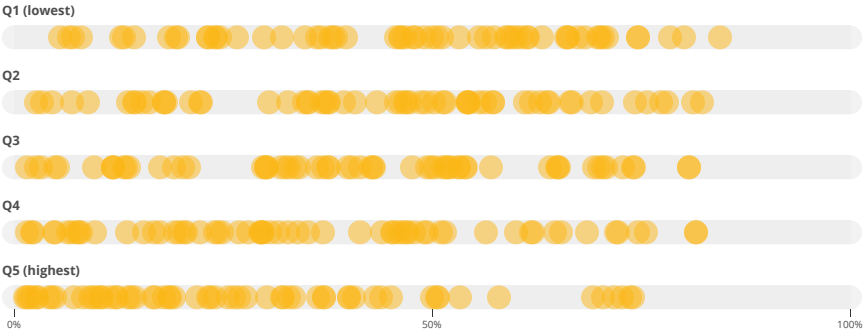
Hover over each square to see the data for specific economies



Source: World Bank: Women, Business and the Law. <https://wbl.worldbank.org/>

Women who believe a husband is justified in beating his wife by wealth quintile

% of women ages 15-49



Source: Demographic and Health Surveys (DHS), Multiple Indicator Cluster Surveys (MICS), and other surveys