

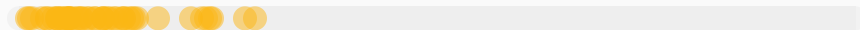


## Violence

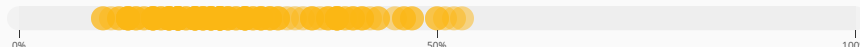
Gender-based violence (GBV) remains one of major obstacles to women's increased agency and is a key domain of gender inequality. To see a shift in GBV patterns, boys and men must also be engaged to reduce the prevalence of such violence.

Percentage of women ages 15-49 who have ever experienced:

Any form of sexual violence

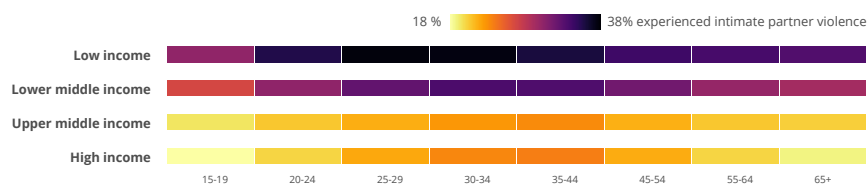


Intimate partner violence



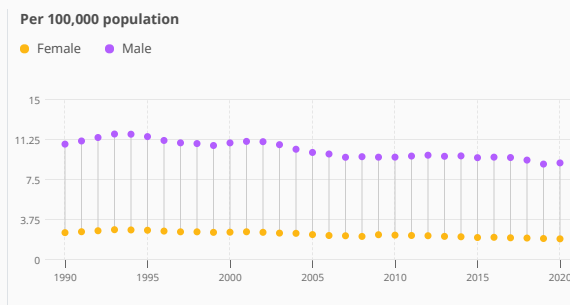
Source: Demographic and Health Surveys (DHS) Statcompiler (<https://www.statcompiler.com/>)

Proportion of women who have ever experienced intimate partner violence (modeled estimate, % of ever partnered women)



Source: The United Nations Inter-Agency Working Group on Violence Against Women Estimation and Data (VAW-IWGED) (WHO, UN Women, UNICEF, UNSD, UNFPA, UNODC)

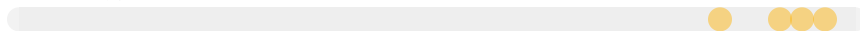
Intentional homicides worldwide by sex



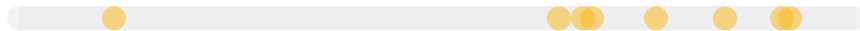
Source: UN Office on Drugs and Crime's International Homicide Statistics database.

Percentage of women who believe a wife is justified refusing sex with her husband if:

She has recently given birth



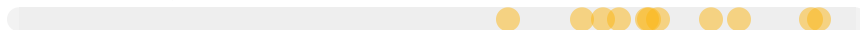
She is tired or not in the mood



She knows he has sex with other women



She knows he has sexually transmitted disease



Source: Demographic and Health Surveys (DHS)

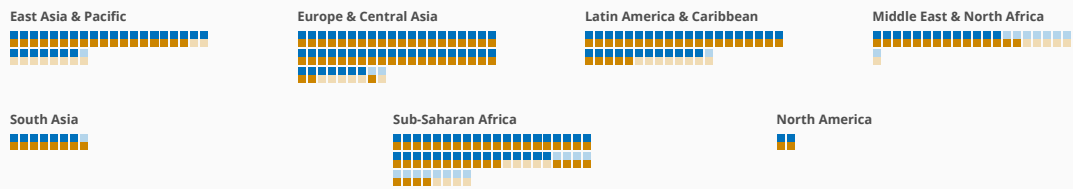
There is legislation specifically addressing domestic violence

There is legislation on sexual harassment in employment

Addressing domestic violence ■ Yes ■ No

Sexual harassment in employment ■ Yes ■ No

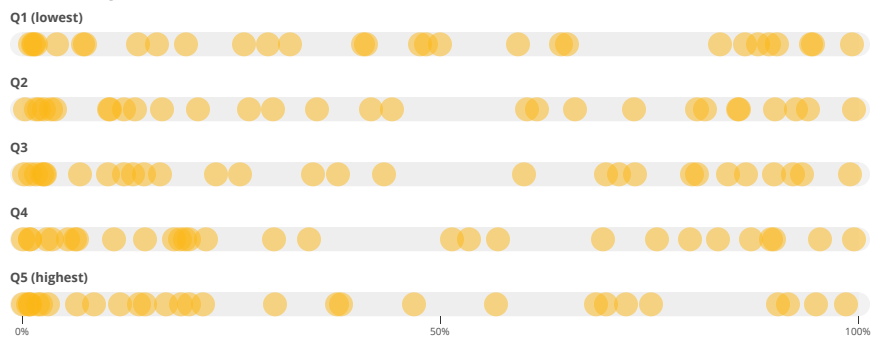
Hover over each square to see the data for specific economies



Source: World Bank: Women, Business and the Law. <https://wbl.worldbank.org/>

Women who have experienced female genital mutilation by wealth quintile

% of women ages 15-49



Source: UNICEF DATA (<http://www.data.unicef.org/>); Demographic and Health Surveys (DHS); Multiple Indicator Cluster Surveys (MICS), and other surveys.